

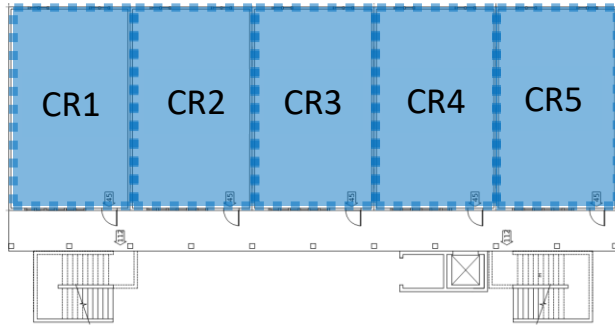
- Gault ES
- Westlake ES
- Mission Hill MS
- Santa Cruz HS

SANTA CRUZ CITY SCHOOLS | 22 FEBRUARY 2023

BARTOS
ARCHITECTURE

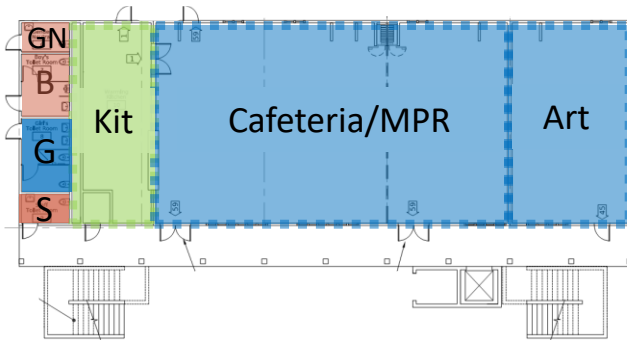
COLLABORATION
ADVOCACY
RESEARCH
EDUCATION

Gault Elementary School: New Classroom Building



Second Level Floor Plan

3/32" = 1'-0" 2



Ground Level Floor Plan

3/32" = 1'-0" 1



Gault Elementary School: New Classroom Building



Gault Elementary School: New Classroom Building

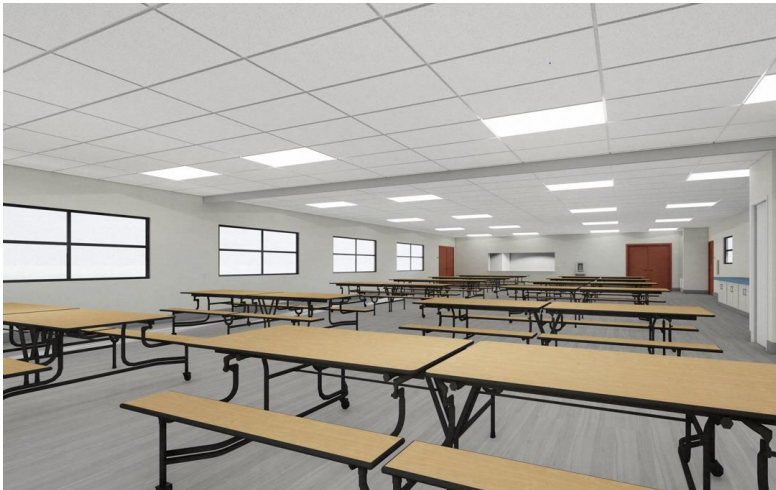


Effey Street Side



Courtyard Side

Gault Elementary School: New Classroom Building



Gault Elementary School: New Classroom Building



Westlake Elementary School: Switchgear Replacement



Westlake Elementary School: Switchgear Replacement



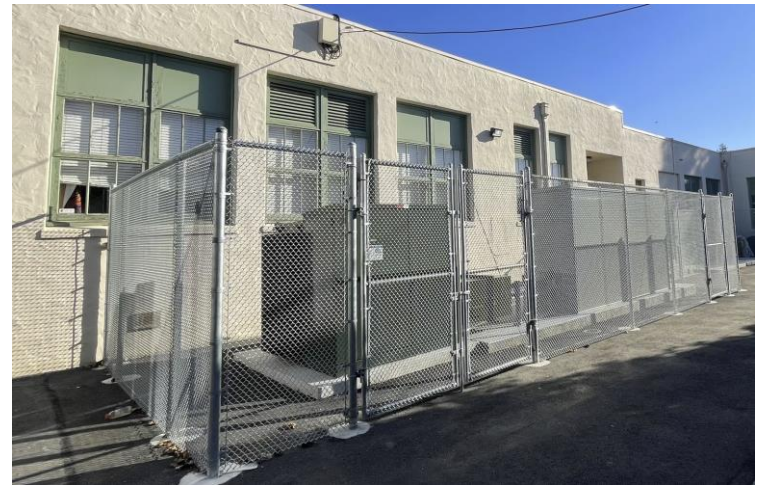
Mission Hill Middle School: Switchgear Replacement



Mission Hill Middle School: Switchgear Replacement

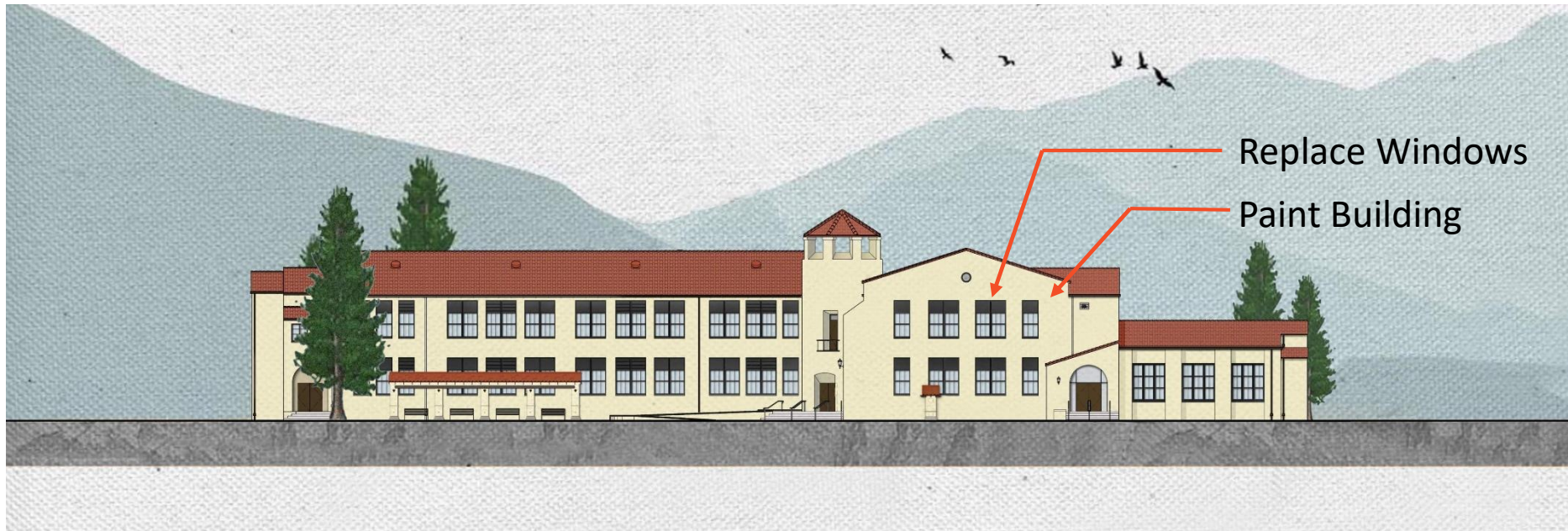


During construction



Completed construction

Mission Hill Middle School: Envelope Improvements



Envelope Project / Partial Modernization

- Window Replacement
- Roof Replacement: Main Building Catwalk
- Exterior Paint
- Auditorium Finishes
- Science Classroom Removal of Cabinetry

← Construction 2023

Mission Hill Middle School: Envelope Improvements

Auditorium Improvements

New Shades

New Windows

New Tack Panels

New Trim

New Finish:
Under Stage Storage

New Finish:
Wainscot



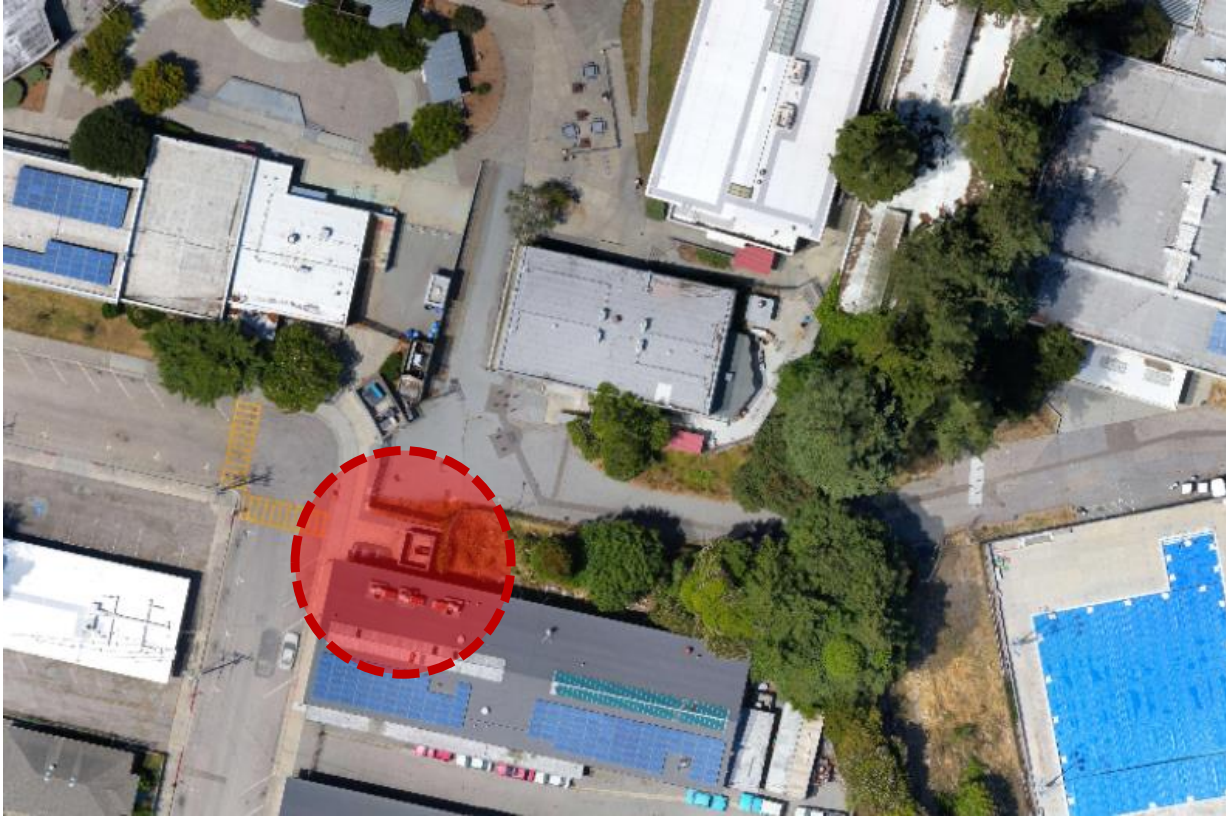
Mission Hill Middle School: Envelope Improvements

Science Classroom: cabinetry removal Summer 2023



Santa Cruz High School: Switchgear Replacement

Completed



Replace

- Campus Electrical Service

Process

- Prioritization
- Location
- Soils
- Survey
- Design/Engineering
 - Electrical
 - Structural
 - Soils
- PGE
- DSA
- Scheduling/Logistics
- Bidding
- Construction
- Closeout

Santa Cruz High School: Switchgear Replacement

Before



During

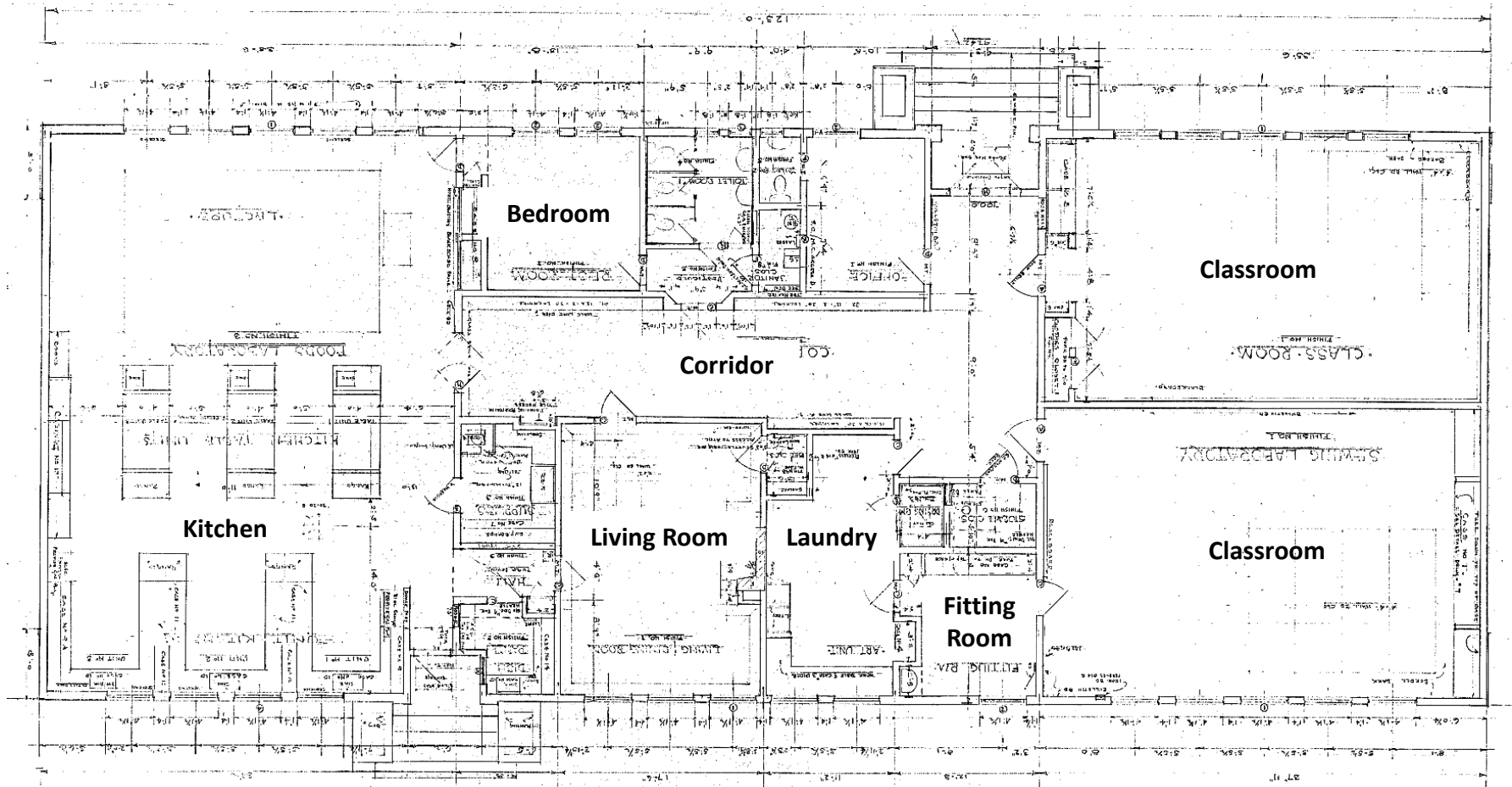


After

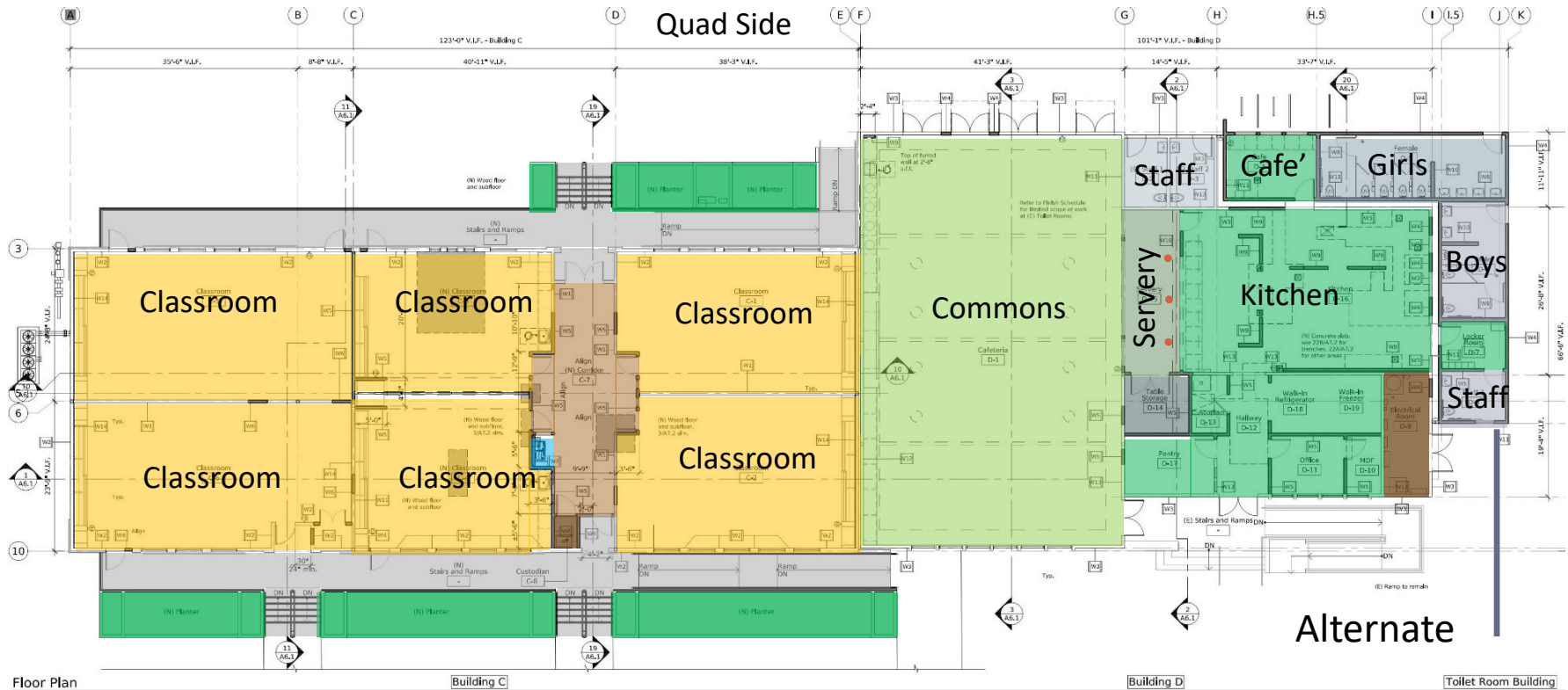


Santa Cruz High School : Commons Building (Unit C|D)

Historic Building Drawings : Floor Plan



Santa Cruz High School : Commons Building (Unit C/D)



Taylor Street

- Two new classrooms (total 6)
- Entry Hall
- Accessible entrances (walkway)
- Renovate Cafeteria
- Renovate Kitchen
- New Restrooms

Santa Cruz High School : Commons Building (Unit C|D)

Interior Rendering of The New Cafeteria



Santa Cruz High School : Commons Building (Unit C|D)



Exterior Progress



Interior Progress

Santa Cruz High School : Commons Building (Unit C|D)

Interior Progress



Santa Cruz High: New Security Fencing at Math Wing



End